

Portage County Safe Routes to School Plan

Portage County, Wisconsin

Stevens Point Christian
Academy



February, 2014

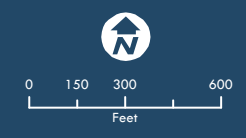
Plan prepared by:

SAA Design Group, Inc.

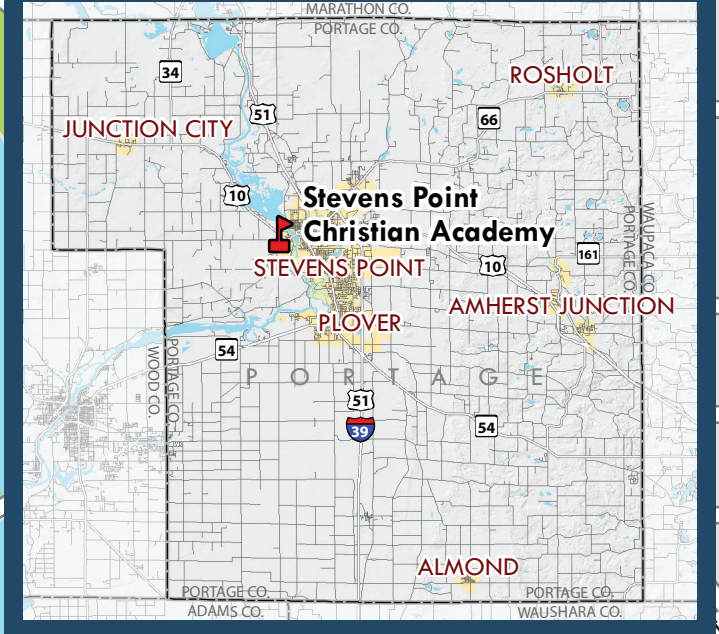
Toole Design Group

Biking & Walking Audit - Stevens Point Christian Academy

Portage County Combined Bicycle & Pedestrian Plan

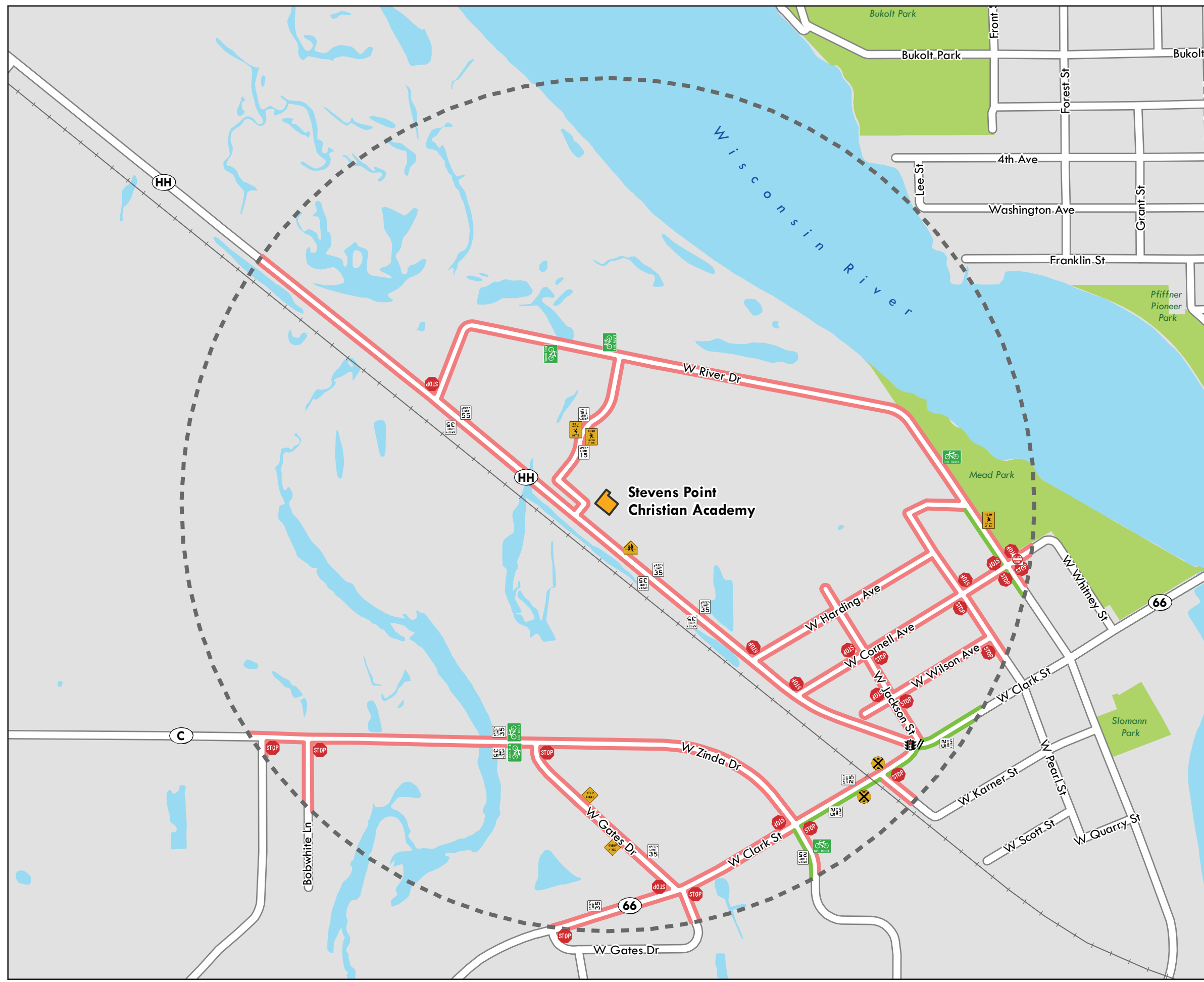


Location Map



Legend SUB AREA 3 - D.1

	Crosswalk		Bike Route
	1/2 Mile Radius		Do Not Enter
	Good Sidewalk		Railroad Crossing
	No Sidewalk		School Crossing
	School		Slow Children
	15 MPH Speed Limit		Stop Ahead
	25 MPH Speed Limit		Stop
	35 MPH Speed Limit		Traffic Signal
	55 MPH Speed Limit		

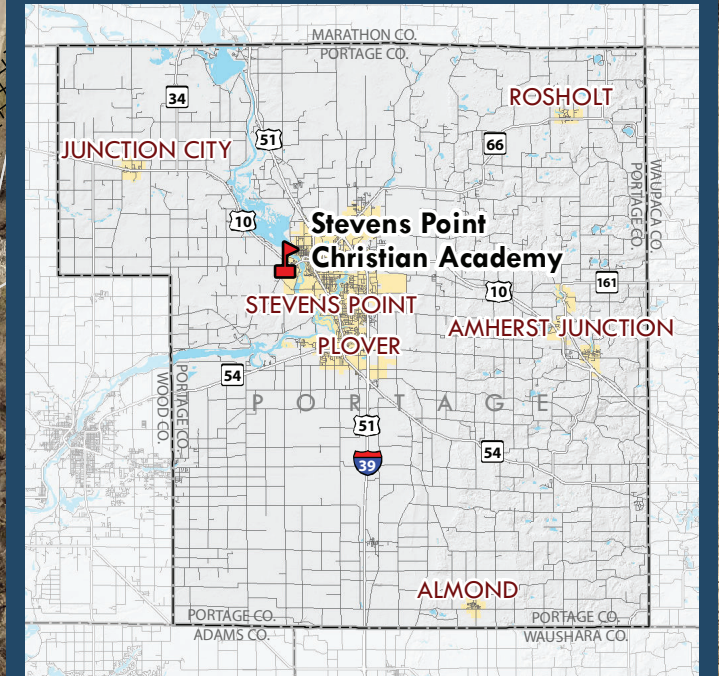


Site Assessment - Stevens Point Christian Academy

Portage County Combined
Bicycle & Pedestrian Plan



Location Map



Legend SUB AREA 3 - D.2

- Existing Sidewalk
- XXXX No Sidewalk
- ==== Existing Crosswalk
- Slow Children
- 15 MPH Speed Limit



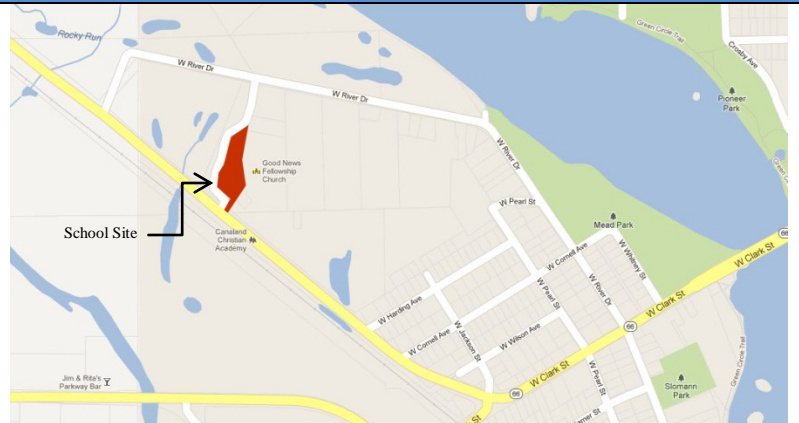
Stevens Point Christian Academy

Location and Contact Information

Stevens Point Christian Academy
 801 County Rd HH W
 Stevens Point, WI 54481
 t(715) 341-3275

Heidi Uitenbroek, School
 Administrator
 School Hours: 8:15am-2:40pm
 Grades K-12

Note: no site improvement map is prepared for Stevens Point Christian Academy. Its remote location and relatively dispersed student population are the campus's most significant challenges to increasing biking and walking.



Recommendations

Issue	Recommendation	Rationale
Strategy Type :: Education		
Parents may be unaware of or ignore established drop-off/pick-up procedures.	3.4.1 Integrate drop-off/pick-up routine education into parent/teacher conferences, orientation, or other significant school-wide event.	Educating parents on the drop-off/pick-up routine is an ongoing process and needs to be communicated at least annually.
Strategy Type :: Encouragement		
The number of students biking or walking to school could be increased.	3.4.2 Conduct a school-wide "Walk and Wheel Wednesday" or similar event and award prizes for school with top percentage, or miles traveled, by bikers and peds. Other initiatives may include media campaigns and participating in national activities like Walk to School Day/Bike to School Day (currently underway at Ben Franklin).	Encouragement activities build interest and enthusiasm and help ensure the program's continued success. See Best Practices (Chapter 3).
There aren't enough encouragement activities in place to promote biking and walking as a fun transportation alternative.	3.4.3 Develop school-based incentive programs such as "Mileage Clubs" or "Golden Sneaker Awards".	See Best Practices (Chapter 3).
Strategy Type :: Enforcement		
Traffic laws and school zone regulations need to be enforced.	3.4.4 Consider driver feedback signs to inform motorists of their rate of speed within school zones.	Drivers disobeying traffic rules create a dangerous environment for bicyclists and pedestrians.
Strategy Type :: Engineering		
The campus does not have bicycle	3.4.5 Install a modern bike rack that	Functional, convenient and secure

racks on-site.	has at least two touch points and locate near school entry on hard surface.	bike parking can encourage regular use of bikes as transportation.
Strategy Type :: Evaluation		
Current conditions for walking and biking throughout the community are not fully known.	3.4.6 Conduct a communitywide transportation survey to measure mode choice within the community. Survey should include primary concerns and popular destinations or routes.	Collecting data can provide information to help guide program planning, understand the progress and identify future actions. See Best Practices (Chapter 3).
The benefits of biking and walking may not be fully understood within the community.	3.4.7 Work with bicycle and pedestrian advocacy groups to increase the working knowledge of biking and walking and their impact on key community health indicators (physical activity, obesity rates, energy consumption, productivity, sick day rates, etc).	See Best Practices (Chapter 3).
Program success cannot be properly evaluated without regular data collection and analysis.	3.4.8 Complete and submit School Tally results to the National Center for Safe Routes to School at least annually.	See Best Practices (Chapter 3).

NO IMPROVEMENT RECOMMENDATIONS

Stevens Point
Christian
Academy

Site Improvement - Stevens Point Christian Academy

Portage County Combined
Bicycle & Pedestrian Plan



Location Map SUB AREA 3 - D.3

